

Hide-Away Storm Shelter™ - Corner Shelter Installation Manual

The Hide-Away shelter is designed and tested to give maximum protection and many years of safe shelter from storms. Before attempting to install the shelter read this manual & follow the safe operational procedures and warnings to prevent injury and or death.

Warning: never use shelter in the event of fire!

Warning: never use shelter when flooding is present.

Warning: safeguard children from playing on or with shelter when not in use.

Warning: any electrical supply to the shelter must be properly grounded and meet NEC requirements.

Warning: never use cooking heat / cooking stoves inside the shelter due to inadequate ventilation.

Warning: never use a generator inside the shelter.

Use **caution** around hinge and pivoting areas when deploying shelter to prevent pinch points.

Use **caution** when anchoring the front to not over tighten bolts.

Do not store non-emergency items inside the shelter as this may prevent you from being able to use all the inside space during a storm.

Receipt of shipment:

The Hide-Away Corner Shelter is shipped assembled & pre-welded with only the roof attachment required. Inspect all wall sections to insure they are not damaged by the freight carrier, should you see any or suspect damage please file a claim immediately with the freight carrier.

Tools for installation:

Heavy lifting tools suggested

Rolalift: <http://www.rolalift.com/products.shtml>



Wheeled Pry Bar - Granger (Item# 4W944)



Depending on volume of shelter installs, Fork Lift Bib. <http://www.contrxcranes.com/fork%20lift%20jibs.html>



4 Wheeled dolly http://www.northerntool.com/shop/tools/product_200370078_200370078



Hand tools:

Wrenches 1-1/8" & 1-1/16" wrench & socket

Crescent wrench, large

Concrete hammer drill, with 5/8" concrete bits

Crow bar

5 LB sledge hammer

Large rubber mallet

3' level

¼" shims

Safety:

The Hide-Away Shelter components are very heavy and proper lifting equipment & methods need to be followed at all times to insure safety. Please review the OSHA safety requirements at <http://www.osha.gov/doc/outreachtraining/htmlfiles/mathan.html>

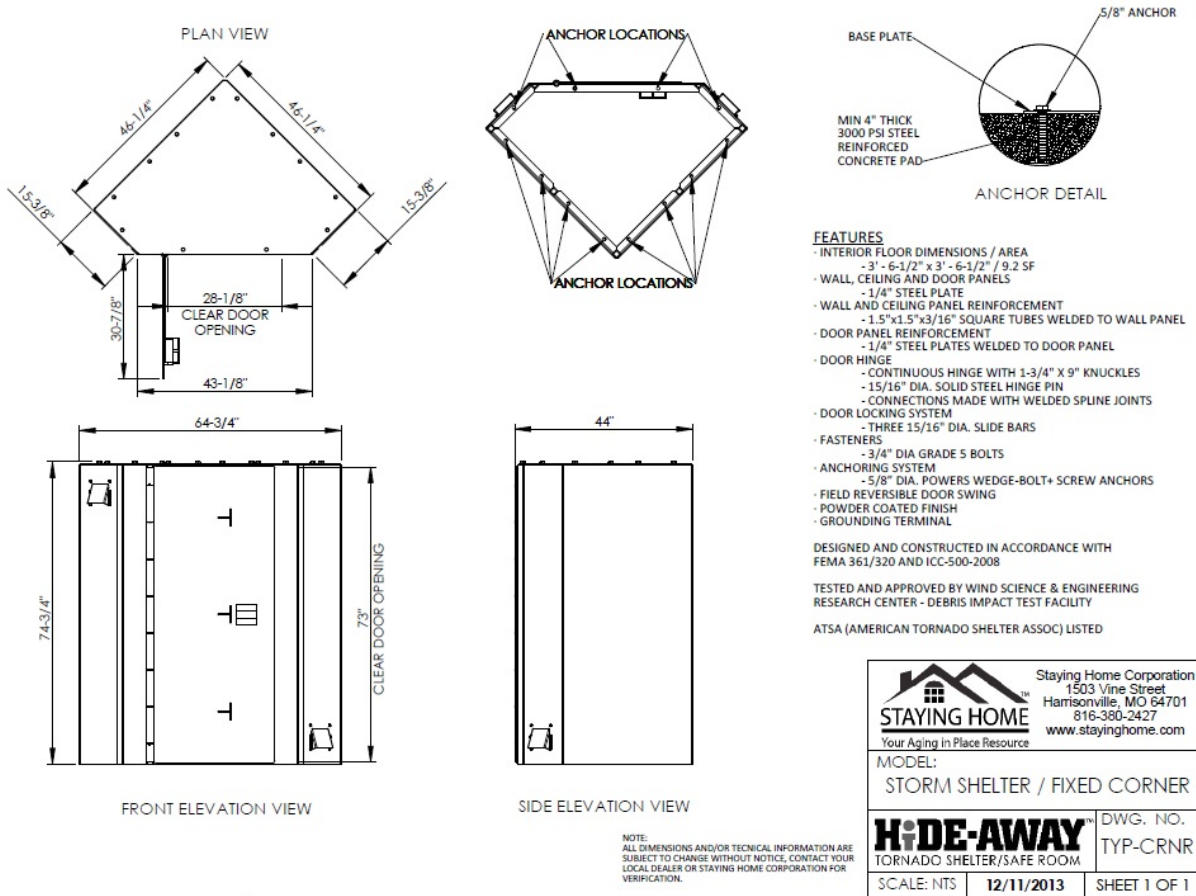
Installing the Shelter:

Confirm concrete surface is smooth and relatively level. Be sure no off-set "bumps" are in the area of the shelter. Shimmiing may be needed, if so, limit shim to ¼".



Note; It will ease the installation by putting ¼" shim stock under the shelter walls to allow your pry bar to maneuver the walls in place. Once walls have been moved and are in position, remove shims.

The Corner Hide-Away Shelter has the pre-welded shelter walls and frame. The door swing hand is determined on site then the shelter is stood up on end that will have the door swing you need. (Use caution shelter is heavy)

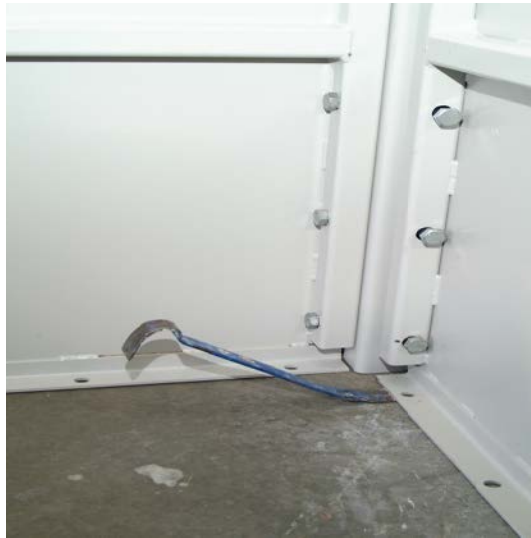


Position the **Corner Shelter upright**. Attach the roof / ceiling panel with nuts & bolts provided. Shim under the shelter walls as needed so the door swing clears.





Open shelter door and shim outer edge temporarily, and tighten all the bolts and nuts. Once all bolts and nuts are secure, using a pry bar, position shelter to final attachment point if needed. Use of a grinder may be needed to flatten high spots.



Remove all shims and test door opening & closing, adjust door so it clears floor by 1/8" and does not drag against the floor.

Insert the three locking pins in the inside of the door. Insert unlatch pins through the slot on the outside of the door, and attached them into the hole on the locking pin. Do not over tighten. Insert rubber cap over the tip of the outside handles. Test from both inside and outside for proper alignment and performance.

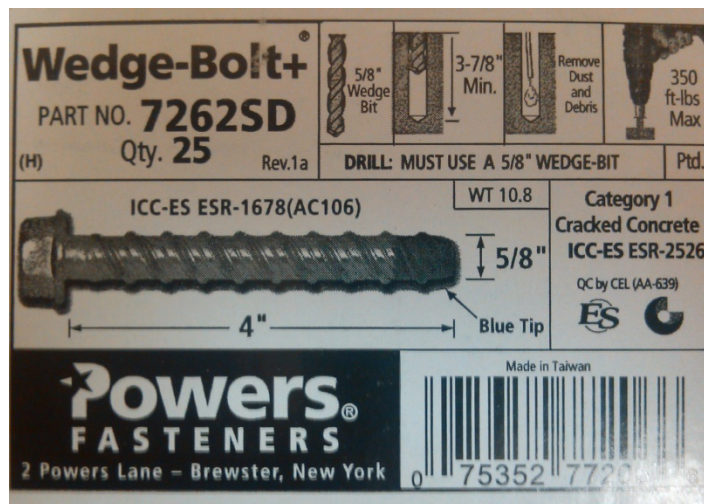


Anchoring the shelter:

With the shelter open locate the back wall anchor locations and concrete anchors. Drill the anchor bolt holes using a 5/8" concrete bit. (Use hearing protection)



Insert the rear concrete anchor Wedge Bolts illustration # 5 and tighten evenly "do not over tighten" With the shelter fully open locate & drill the holes for front anchors using 5/8" concrete bit and hammer drill. Insert the front concrete anchors and tighten evenly "do not over tighten". Clean area after drilling to remove concrete dust and debris.



Finish by tightening ALL bolts, do not over tighten!



Demonstrate use:

Take plenty of time to show and demonstrate the shelter. Show the customer the procedure in the owner's manual on how to use shelter, follow the procedure several times to insure the customer knows how to properly use the shelter. Discuss with the customer to have the shelter clear of non-emergency items and not block the door of shelter. Discuss with customer to enter the shelter in plenty of time when weather conditions are likely to produce severe storms or tornados. Hearing protection is recommended due to the extreme noise associated with a tornado.

