

- Features:**
- Battery Powered: 24 VDC Control System
 - Rated Load: 400 lbs
 - Speed: 8-10 fpm
 - Max. Travel: 14'-0"
 - Car Size: 33W x 35D x 75H
 - Overhead Clearance: 7'-2" Min.
 - Powder Coated Metal: Gray White
 - Vision Panels: Clear Acrylic
 - Car Light: Recessed LED
 - Telephone: Inside Telephone Cabinet
 - Automatic operation
 - Key Lock on controls
 - Emergency Stop Switch and Alarm
 - Status LED
 - Winding Drum Drive with two 1/4" aircraft cables
 - Electromechanical Interlock on Doors
 - Car Door monitor
 - Grab Rail
 - Slack Cable Safety Device
 - Final Limit Switches

| | | | |
|--------------------------------------|--|-----------|----------|
| UNLESS OTHERWISE SPECIFIED: | | NAME | DATE |
| DIMENSIONS ARE IN INCHES | | | 8/8/2016 |
| TOLERANCES: | | | |
| FRACTIONAL: ±1/16 | | DRAWN | |
| ANGULAR: ±0.5° | | CHECKED | |
| ONE PLACE DECIMAL ±0.1 | | ENG APPR. | |
| TWO PLACE DECIMAL ±0.01 | | MFG APPR. | |
| THREE PLACE DECIMAL ±0.005 | | Q.A. | |
| INTERPRET GEOMETRIC TOLERANCING PER: | | PROJECT: | |
| MATERIAL | | | |
| FINISH | | | |
| DO NOT SCALE DRAWING | | | |

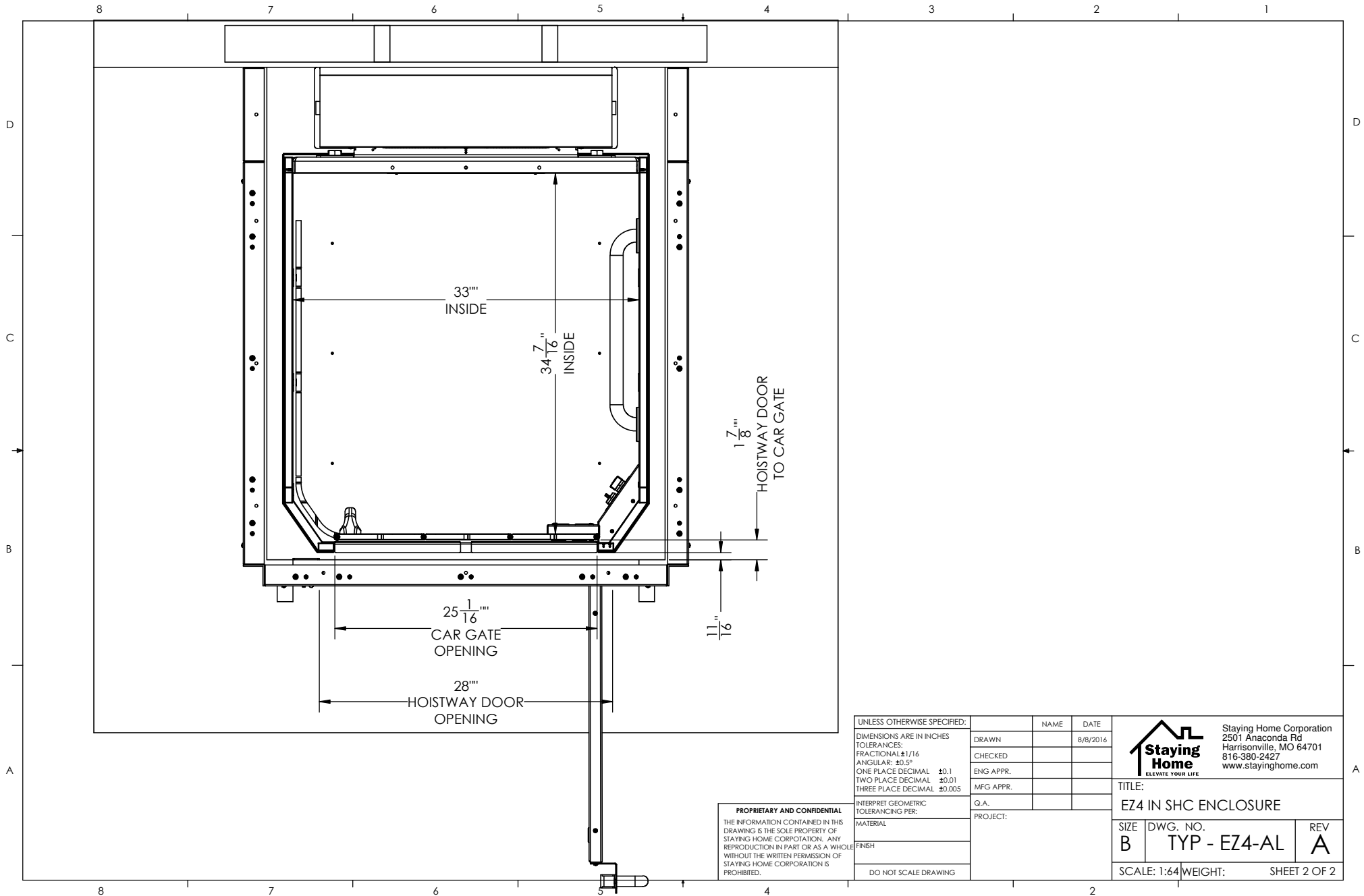

 Staying Home Corporation
 2501 Anaconda Rd
 Harrisonville, MO 64701
 816-380-2427
 www.stayinghome.com

TITLE:
EZ4 INSIDE SHC ENCLOSURE

| | | |
|-----------|-------------------------|----------|
| SIZE B | DWG. NO. TYP - EZ4-A | REV A |
|-----------|-------------------------|----------|

SCALE: 1:64 WEIGHT: SHEET 1 OF 2

PROPRIETARY AND CONFIDENTIAL
 THE INFORMATION CONTAINED IN THIS DRAWING IS THE SOLE PROPERTY OF STAYING HOME CORPORATION. ANY REPRODUCTION IN PART OR AS A WHOLE WITHOUT THE WRITTEN PERMISSION OF STAYING HOME CORPORATION IS PROHIBITED.



PROPRIETARY AND CONFIDENTIAL
 THE INFORMATION CONTAINED IN THIS DRAWING IS THE SOLE PROPERTY OF STAYING HOME CORPORATION. ANY REPRODUCTION IN PART OR AS A WHOLE WITHOUT THE WRITTEN PERMISSION OF STAYING HOME CORPORATION IS PROHIBITED.

| | | |
|--------------------------------------|-----------|----------|
| UNLESS OTHERWISE SPECIFIED: | | |
| DIMENSIONS ARE IN INCHES | NAME | DATE |
| TOLERANCES: | DRAWN | 8/8/2016 |
| FRACTIONAL: ±1/16 | CHECKED | |
| ANGULAR: ±0.5° | ENG APPR. | |
| ONE PLACE DECIMAL ±0.1 | MFG APPR. | |
| TWO PLACE DECIMAL ±0.01 | Q.A. | |
| THREE PLACE DECIMAL ±0.005 | PROJECT: | |
| INTERPRET GEOMETRIC TOLERANCING PER: | | |
| MATERIAL | | |
| FINISH | | |
| DO NOT SCALE DRAWING | | |

| | | | |
|---|---------------------------------|--|--|
|  | | Staying Home Corporation 2501 Anaconda Rd Harrisonville, MO 64701 816-380-2427 www.stayinghome.com | |
| | | TITLE: EZ4 IN SHC ENCLOSURE | |
| SIZE B | DWG. NO. TYP - EZ4-AL | REV A | |
| SCALE: 1:64 | | WEIGHT: SHEET 2 OF 2 | |