

- Features:**
- Battery Powered: 24 VDC Control System
  - Rated Load: 400 lbs
  - Speed: 15-18 fpm
  - Max. Travel: 21'-0"
  - Car Size: 33W x 35D x 75H
  - Overhead Clearance: 7'-2" Min.
  - Powder Coated Metal: Gray White
  - Vision Panels: Clear Acrylic
  - Car Light: Recessed LED
  - Telephone: Inside Telephone Cabinet
  - Automatic operation
  - Key Lock on controls
  - Emergency Stop Switch and Alarm
  - Status LED
  - Winding Drum Drive with two 1/4" aircraft cables
  - Electromechanical Interlock on Doors
  - Car Gate monitor
  - Grab Rail
  - Slack Cable Safety Device
  - Final Limit Switches

UNLESS OTHERWISE SPECIFIED:		NAME	DATE
DIMENSIONS ARE IN INCHES		DRAWN	8/8/2016
TOLERANCES:		CHECKED	
FRACTIONAL: ±1/16		ENG APPR.	
ANGULAR: ±0.5°		MFG APPR.	
ONE PLACE DECIMAL ±0.1		Q.A.	
TWO PLACE DECIMAL ±0.01		COMMENTS:	
THREE PLACE DECIMAL ±0.005			
INTERPRET GEOMETRIC TOLERANCING PER:			
MATERIAL			
FINISH			
DO NOT SCALE DRAWING			

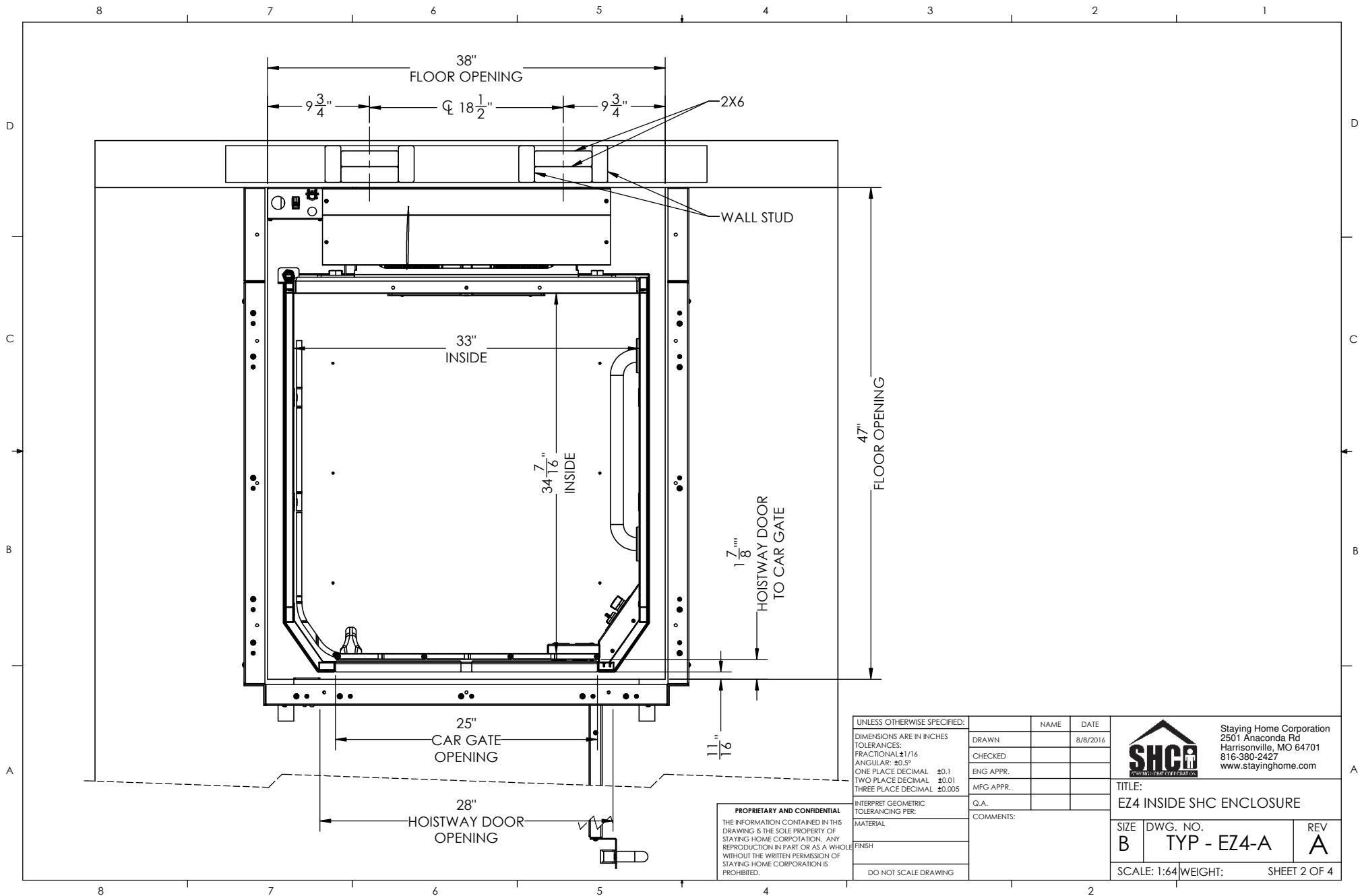

 Staying Home Corporation  
 2501 Anaconda Rd  
 Harrisonville, MO 64701  
 816-380-2427  
 www.stayinghome.com

TITLE:  
EZ4 INSIDE SHC ENCLOSURE

SIZE B	DWG. NO. TYP - EZ4-A	REV A
-----------	-------------------------	----------

SCALE: 1:64 WEIGHT: SHEET 1 OF 4

**PROPRIETARY AND CONFIDENTIAL**  
 THE INFORMATION CONTAINED IN THIS DRAWING IS THE SOLE PROPERTY OF STAYING HOME CORPORATION. ANY REPRODUCTION IN PART OR AS A WHOLE WITHOUT THE WRITTEN PERMISSION OF STAYING HOME CORPORATION IS PROHIBITED.



**PROPRIETARY AND CONFIDENTIAL**  
 THE INFORMATION CONTAINED IN THIS DRAWING IS THE SOLE PROPERTY OF STAYING HOME CORPORATION. ANY REPRODUCTION IN PART OR AS A WHOLE WITHOUT THE WRITTEN PERMISSION OF STAYING HOME CORPORATION IS PROHIBITED.

UNLESS OTHERWISE SPECIFIED:  
 DIMENSIONS ARE IN INCHES  
 TOLERANCES:  
 FRACTIONAL  $\pm 1/16$   
 ANGULAR:  $\pm 0.5^\circ$   
 ONE PLACE DECIMAL  $\pm 0.1$   
 TWO PLACE DECIMAL  $\pm 0.01$   
 THREE PLACE DECIMAL  $\pm 0.005$

INTERPRET GEOMETRIC TOLERANCING PER:  
 MATERIAL  
 FINISH

DO NOT SCALE DRAWING

NAME	DATE
DRAWN	8/8/2016
CHECKED	
ENG APPR.	
MFG APPR.	
Q.A.	
COMMENTS:	

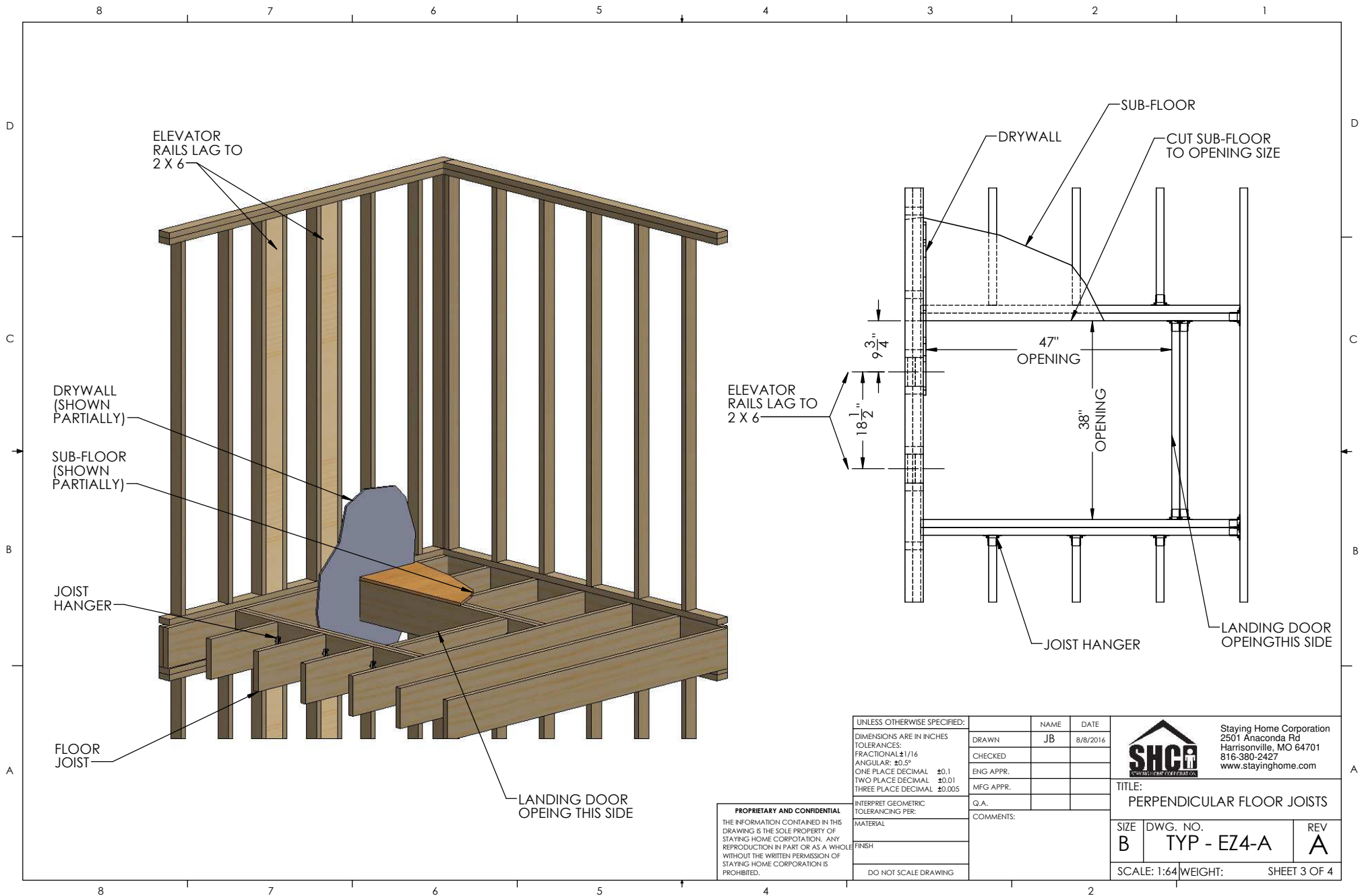
Staying Home Corporation  
 2501 Anaconda Rd  
 Harrisonville, MO 64701  
 816-380-2427  
 www.stayinghome.com

**SHC**  
CONSTRUCTION

TITLE:  
 EZ4 INSIDE SHC ENCLOSURE

SIZE B	DWG. NO. TYP - EZ4-A	REV A
-----------	-------------------------	----------

SCALE: 1:64 WEIGHT: SHEET 2 OF 4

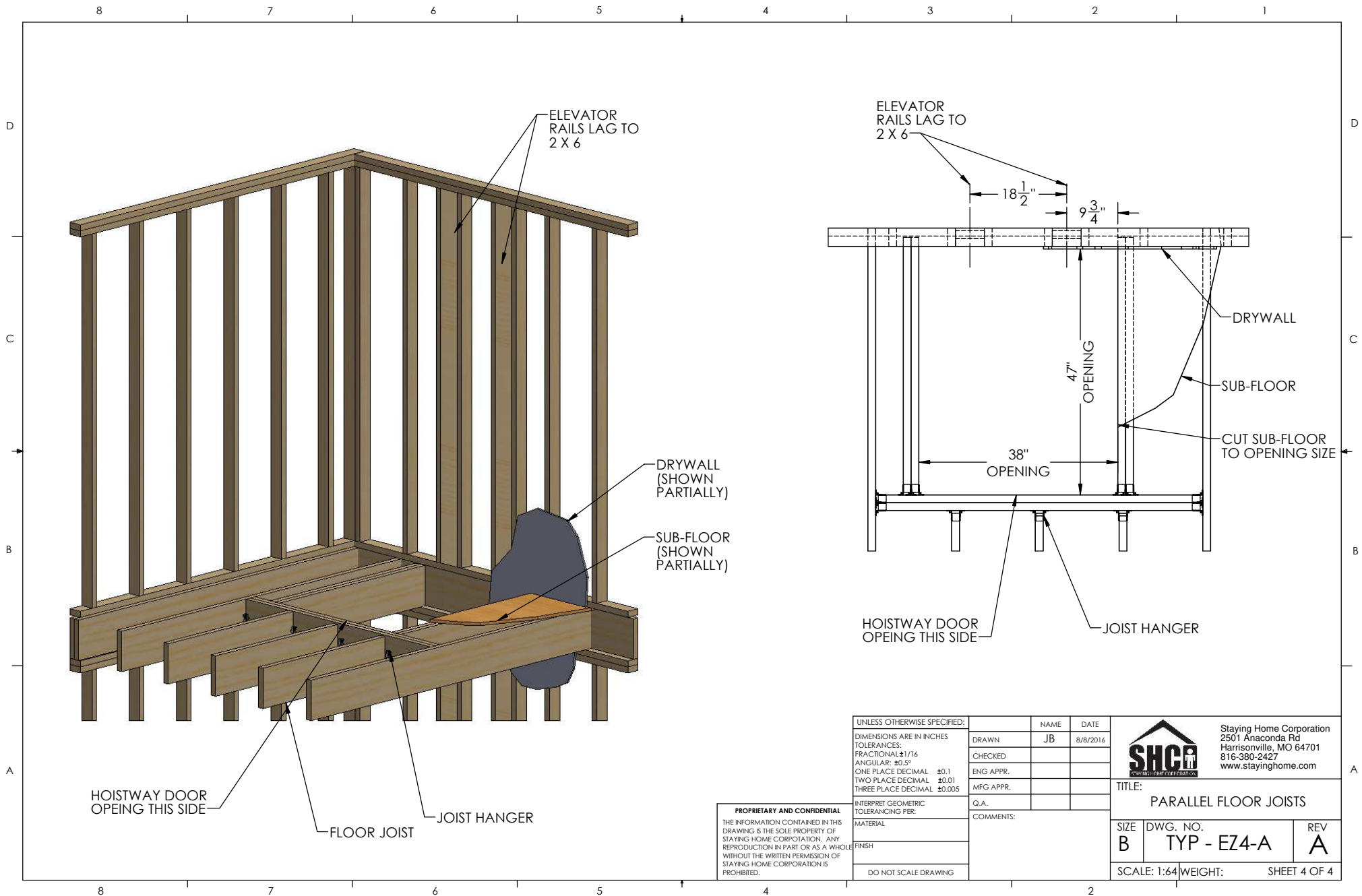


**PROPRIETARY AND CONFIDENTIAL**  
 THE INFORMATION CONTAINED IN THIS DRAWING IS THE SOLE PROPERTY OF STAYING HOME CORPORATION. ANY REPRODUCTION IN PART OR AS A WHOLE WITHOUT THE WRITTEN PERMISSION OF STAYING HOME CORPORATION IS PROHIBITED.

UNLESS OTHERWISE SPECIFIED:	
DIMENSIONS ARE IN INCHES	
TOLERANCES:	
FRACTIONAL	±1/16
ANGULAR	±0.5°
ONE PLACE DECIMAL	±0.1
TWO PLACE DECIMAL	±0.01
THREE PLACE DECIMAL	±0.005
INTERPRET GEOMETRIC TOLERANCING PER:	
MATERIAL	
FINISH	
DO NOT SCALE DRAWING	

NAME	DATE
DRAWN JB	8/8/2016
CHECKED	
ENG APPR.	
MFG APPR.	
Q.A.	
COMMENTS:	

 Staying Home Corporation 2501 Anaconda Rd Harrisonville, MO 64701 816-380-2427 www.stayinghome.com		
		<b>TITLE:</b> PERPENDICULAR FLOOR JOISTS
<b>SIZE</b> B	<b>DWG. NO.</b> TYP - EZ4-A	<b>REV</b> A
<b>SCALE:</b> 1:64		<b>WEIGHT:</b> SHEET 3 OF 4



UNLESS OTHERWISE SPECIFIED:

DIMENSIONS ARE IN INCHES  
 TOLERANCES:  
 FRACTIONAL: ±1/16  
 ANGULAR: ±0.5°  
 ONE PLACE DECIMAL ±0.1  
 TWO PLACE DECIMAL ±0.01  
 THREE PLACE DECIMAL ±0.005

INTERPRET GEOMETRIC TOLERANCING PER:  
 MATERIAL:  
 FINISH:  
 DO NOT SCALE DRAWING

	NAME	DATE
DRAWN	JB	8/8/2016
CHECKED		
ENG APPR.		
MFG APPR.		
Q.A.		
COMMENTS:		



Staying Home Corporation  
 2501 Anaconda Rd  
 Harrisonville, MO 64701  
 816-380-2427  
 www.stayinghome.com

**PROPRIETARY AND CONFIDENTIAL**  
 THE INFORMATION CONTAINED IN THIS DRAWING IS THE SOLE PROPERTY OF STAYING HOME CORPORATION. ANY REPRODUCTION IN PART OR AS A WHOLE WITHOUT THE WRITTEN PERMISSION OF STAYING HOME CORPORATION IS PROHIBITED.

TITLE: PARALLEL FLOOR JOISTS		
SIZE B	DWG. NO. TYP - EZ4-A	REV A
SCALE: 1:64		WEIGHT: SHEET 4 OF 4