
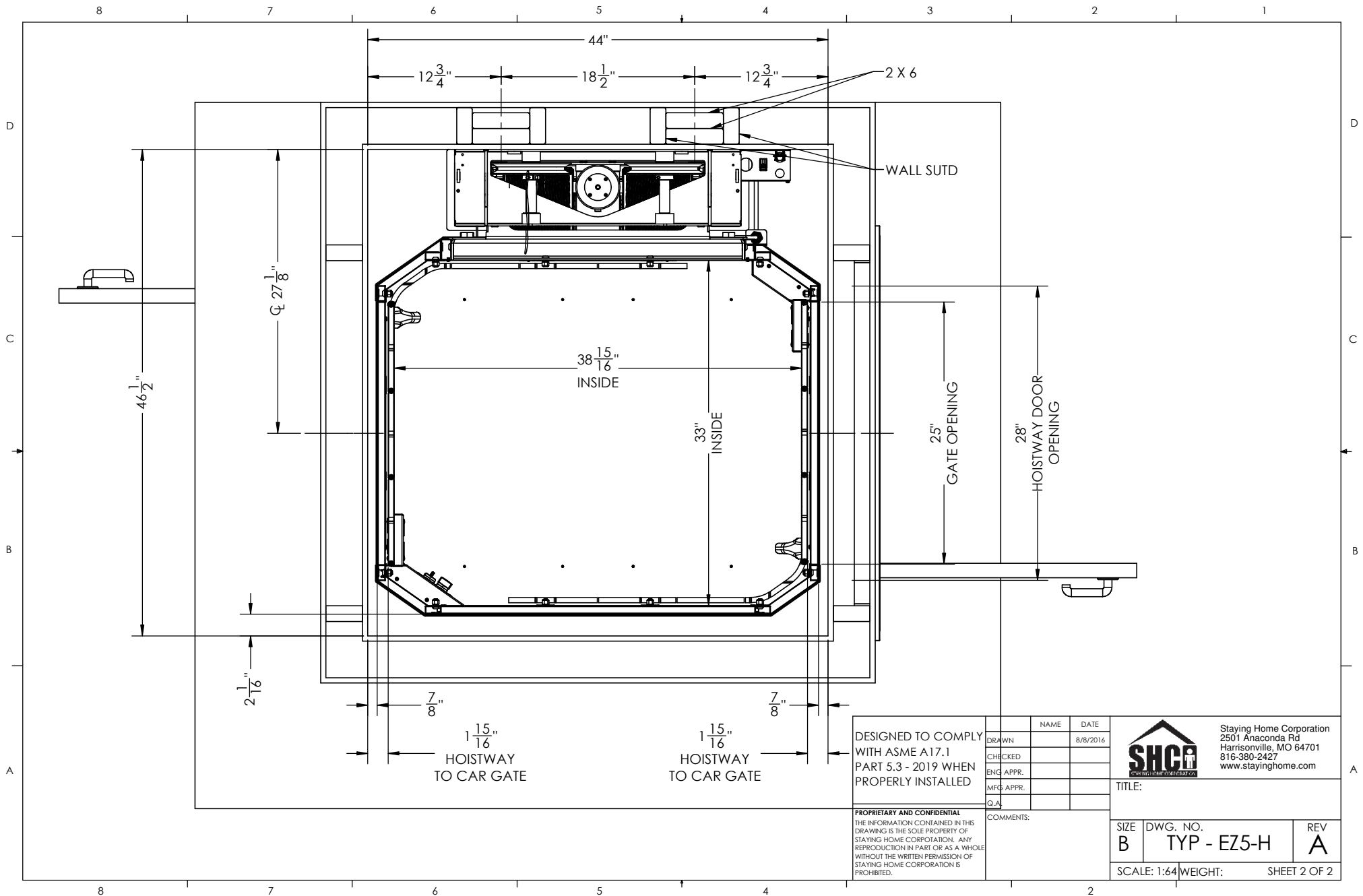


- Features:**
- Battery Powered: 24 VDC Control System
 - Rated Load: 400 lbs
 - Speed: 15-18 fpm
 - Max. Travel: 21'-0"
 - Car Size: 33W x 39D x 75H
 - Overhead Clearance: 7'-2" Min.
 - Powder Coated Metal: Gray White
 - Vision Panels: Clear Acrylic
 - Car Light: Recessed LED
 - Telephone: Inside Telephone Cabinet
 - Automatic Operation up/down controls
 - Key Lock on controls
 - Emergency Stop Switch and Alarm
 - Status LED
 - Winding Drum Drive with two 1/4" aircraft cables
 - Electromechanical Interlock on Hoistway Doors
 - Grab Rail
 - Slack Cable Safety Device
 - Final Limit Switches

DESIGNED TO COMPLY WITH ASME A17.1 PART 5.3 - 2019 WHEN PROPERLY INSTALLED	DRAWN	NAME	DATE	 Staying Home Corporation 2501 Anaconda Rd Harrisonville, MO 64701 816-380-2427 www.stayinghome.com
	CHECKED		8/8/2016	
	ENG APPR.			
	MFG APPR.			
PROPRIETARY AND CONFIDENTIAL	Q.A.			TITLE: EZ5 INSIDE HOISTWAY BY OTHERS
THE INFORMATION CONTAINED IN THIS DRAWING IS THE SOLE PROPERTY OF STAYING HOME CORPORATION. ANY REPRODUCTION IN PART OR AS A WHOLE WITHOUT THE WRITTEN PERMISSION OF STAYING HOME CORPORATION IS PROHIBITED.	COMMENTS:			SIZE DWG. NO. REV B TYP - EZ5-H A
				SCALE: 1:64 WEIGHT: SHEET 1 OF 2



DESIGNED TO COMPLY
 WITH ASME A17.1
 PART 5.3 - 2019 WHEN
 PROPERLY INSTALLED

	NAME	DATE
DRAWN		8/8/2016
CHECKED		
ENG. APPR.		
MFG. APPR.		
Q.A.		


 Staying Home Corporation
 2501 Anaconda Rd
 Harrisonville, MO 64701
 816-380-2427
 www.stayinghome.com

TITLE:

PROPRIETARY AND CONFIDENTIAL
 THE INFORMATION CONTAINED IN THIS
 DRAWING IS THE SOLE PROPERTY OF
 STAYING HOME CORPORATION. ANY
 REPRODUCTION IN PART OR AS A WHOLE
 WITHOUT THE WRITTEN PERMISSION OF
 STAYING HOME CORPORATION IS
 PROHIBITED.

COMMENTS:

SIZE B	DWG. NO. TYP - EZ5-H	REV A
-----------	-------------------------	----------

SCALE: 1:64 WEIGHT: SHEET 2 OF 2