

DESIGNED TO COMPLY WITH ASME A17.1 PART 5.3 WHEN PROPERLY INSTALLED

CONTROLLER CONFORMS TO ASME A17.5 INTERTEK 4010781



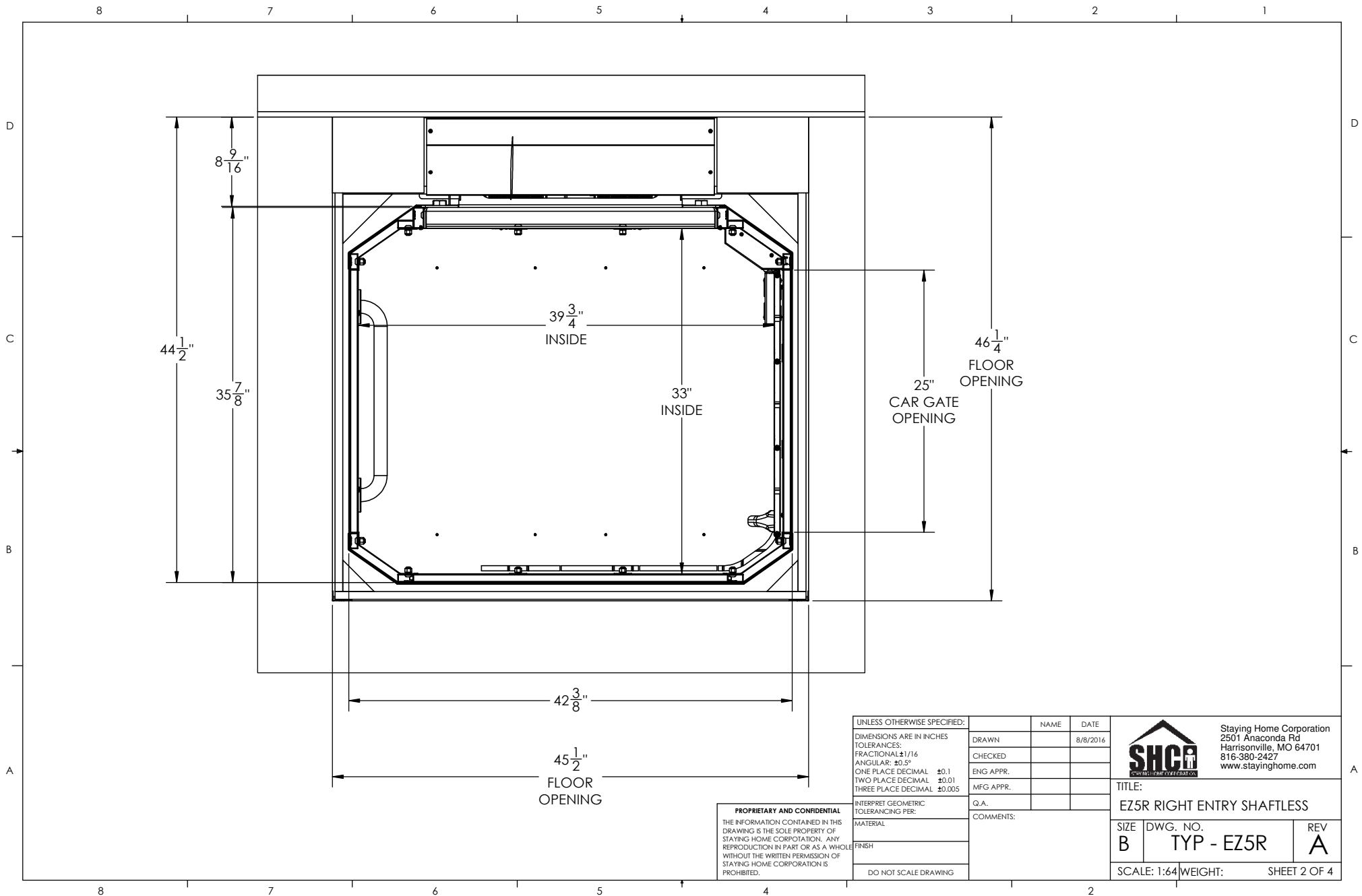
Features:

- Battery Powered: 24 VDC Control System
- Rated Load: 400 lbs
- Speed: 8-10 fpm
- Max. Travel: 14'-0"
- Car Size: 33W x 39D x 75H
- Overhead Clearance: 7'-6" Min.
- Powder Coated Metal: Gray White
- Vision Panels: Clear Acrylic
- Car Light: Recessed LED
- Telephone: Inside Telephone Cabinet
- Constant pressure up/down controls
- Key Lock on controls
- Emergency Stop Switch and Alarm
- Status LED
- Winding Drum Drive with two 1/4" aircraft cables
- Electromechanical Interlock on Gate
- Grab Rail
- Slack Cable Safety Device
- Final Limit Switches
- Safety Obstruction Sensors above and below Car

PROPRIETARY AND CONFIDENTIAL
 THE INFORMATION CONTAINED IN THIS DRAWING IS THE SOLE PROPERTY OF STAYING HOME CORPORATION. ANY REPRODUCTION IN PART OR AS A WHOLE WITHOUT THE WRITTEN PERMISSION OF STAYING HOME CORPORATION IS PROHIBITED.

UNLESS OTHERWISE SPECIFIED:		NAME	DATE
DIMENSIONS ARE IN INCHES		DRAWN	8/8/2016
TOLERANCES:		CHECKED	
FRACTIONAL: ±1/16		ENG APPR.	
ANGULAR: ±0.5°		MFG APPR.	
ONE PLACE DECIMAL ±0.1		Q.A.	
TWO PLACE DECIMAL ±0.01		COMMENTS:	
THREE PLACE DECIMAL ±0.005			
INTERPRET GEOMETRIC TOLERANCING PER:			
MATERIAL			
FINISH			
DO NOT SCALE DRAWING			

		Staying Home Corporation 2501 Anaconda Rd Harrisonville, MO 64701 816-380-2427 www.stayinghome.com	
		TITLE: EZ5R RIGHT ENTRY SHAFTLESS	
SIZE B	DWG. NO. TYP - EZ5R	REV A	
SCALE: 1:64		WEIGHT: SHEET 1 OF 4	



UNLESS OTHERWISE SPECIFIED:		NAME	DATE
DIMENSIONS ARE IN INCHES		DRAWN	8/8/2016
TOLERANCES:		CHECKED	
FRACTIONAL: ±1/16		ENG APPR.	
ANGULAR: ±0.5°		MFG APPR.	
ONE PLACE DECIMAL ±0.1		Q.A.	
TWO PLACE DECIMAL ±0.01		COMMENTS:	
THREE PLACE DECIMAL ±0.005			
INTERPRET GEOMETRIC TOLERANCING PER:			
MATERIAL			
FINISH			
DO NOT SCALE DRAWING			

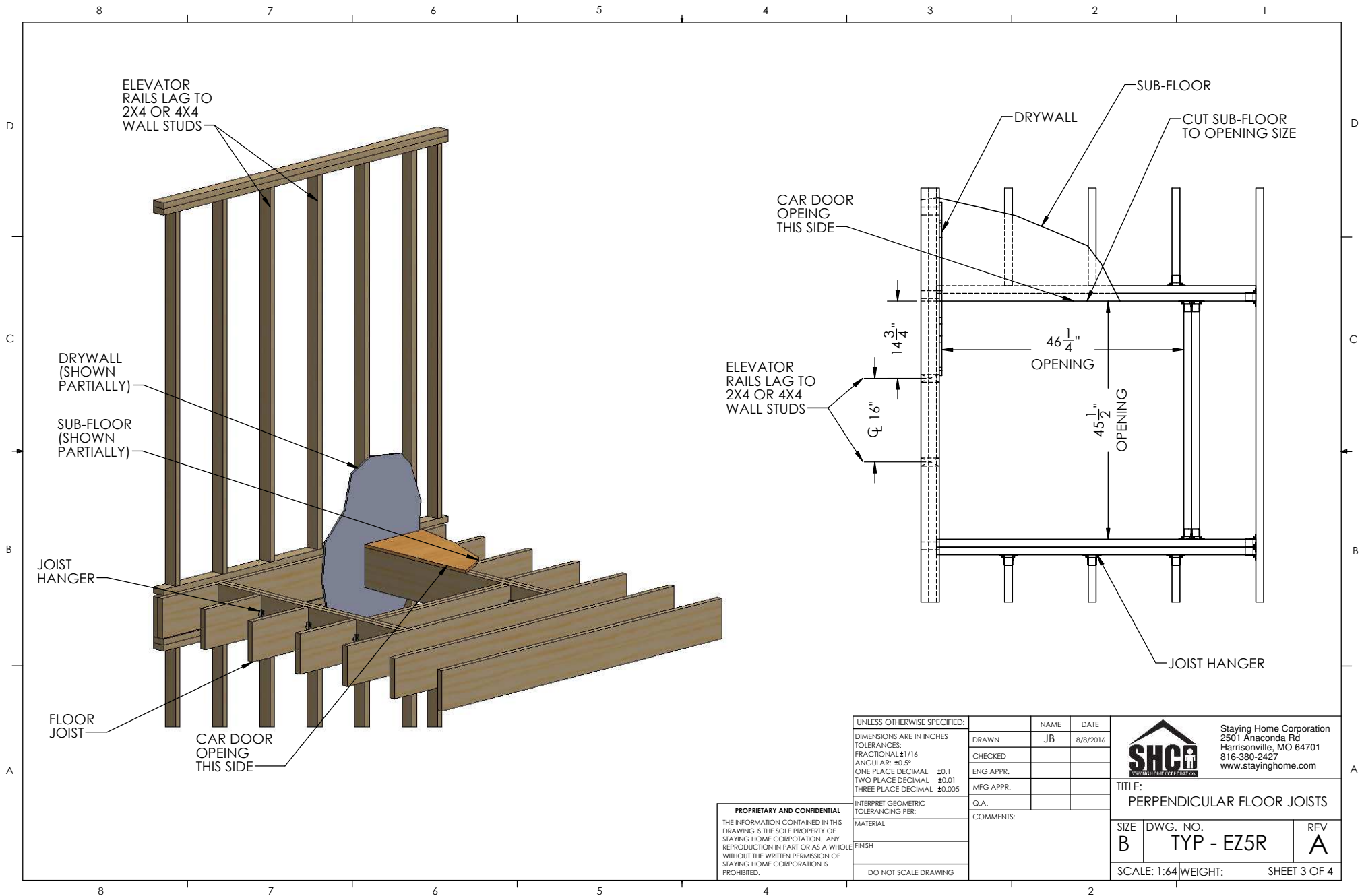

 Staying Home Corporation
 2501 Anaconda Rd
 Harrisonville, MO 64701
 816-380-2427
 www.stayinghome.com

TITLE:
EZ5R RIGHT ENTRY SHAFTLESS

SIZE B	DWG. NO. TYP - EZ5R	REV A
------------------	-------------------------------	-----------------

SCALE: 1:64 WEIGHT: SHEET 2 OF 4

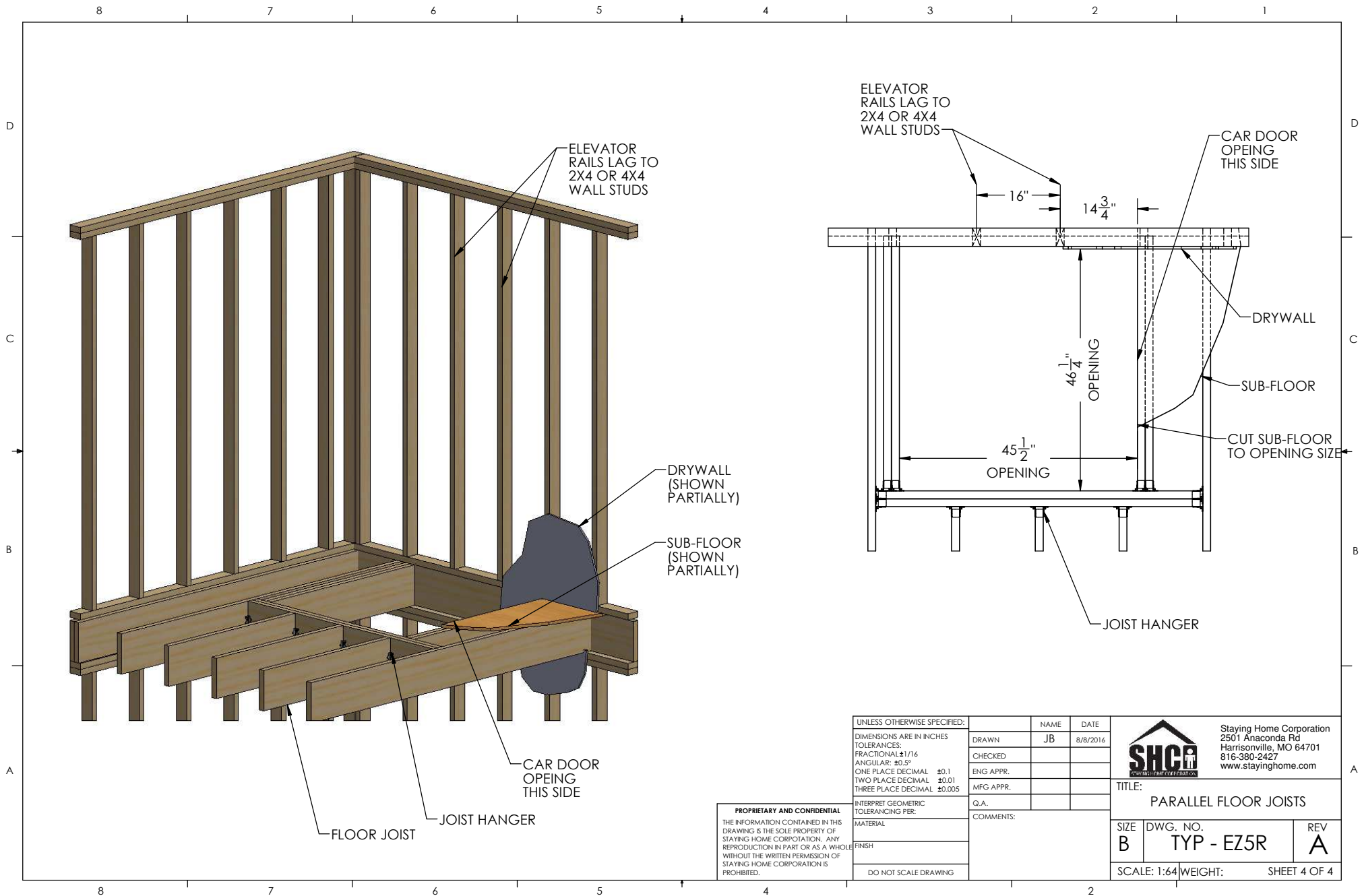
PROPRIETARY AND CONFIDENTIAL
 THE INFORMATION CONTAINED IN THIS DRAWING IS THE SOLE PROPERTY OF STAYING HOME CORPORATION. ANY REPRODUCTION IN PART OR AS A WHOLE WITHOUT THE WRITTEN PERMISSION OF STAYING HOME CORPORATION IS PROHIBITED.



PROPRIETARY AND CONFIDENTIAL
 THE INFORMATION CONTAINED IN THIS DRAWING IS THE SOLE PROPERTY OF STAYING HOME CORPORATION. ANY REPRODUCTION IN PART OR AS A WHOLE WITHOUT THE WRITTEN PERMISSION OF STAYING HOME CORPORATION IS PROHIBITED.

UNLESS OTHERWISE SPECIFIED:		NAME	DATE
DIMENSIONS ARE IN INCHES		DRAWN	JB 8/8/2016
TOLERANCES:		CHECKED	
FRACTIONAL ±1/16		ENG APPR.	
ANGULAR: ±0.5°		MFG APPR.	
ONE PLACE DECIMAL ±0.1		Q.A.	
TWO PLACE DECIMAL ±0.01		COMMENTS:	
THREE PLACE DECIMAL ±0.005			
INTERPRET GEOMETRIC TOLERANCING PER:			
MATERIAL			
FINISH			
DO NOT SCALE DRAWING			

		Staying Home Corporation 2501 Anaconda Rd Harrisonville, MO 64701 816-380-2427 www.stayinghome.com	
		TITLE: PERPENDICULAR FLOOR JOISTS	
SIZE B	DWG. NO. TYP - EZ5R	REV A	
SCALE: 1:64		WEIGHT: SHEET 3 OF 4	



UNLESS OTHERWISE SPECIFIED:		NAME	DATE
DIMENSIONS ARE IN INCHES		DRAWN	JB
TOLERANCES:		CHECKED	8/8/2016
FRACTIONAL: ±1/16		ENG APPR.	
ANGULAR: ±0.5°		MFG APPR.	
ONE PLACE DECIMAL ±0.1		Q.A.	
TWO PLACE DECIMAL ±0.01		COMMENTS:	
THREE PLACE DECIMAL ±0.005			
INTERPRET GEOMETRIC TOLERANCING PER:			
MATERIAL			
FINISH			
DO NOT SCALE DRAWING			

NAME	DATE
JB	8/8/2016


 Staying Home Corporation
 2501 Anaconda Rd
 Harrisonville, MO 64701
 816-380-2427
 www.stayinghome.com

TITLE:
 PARALLEL FLOOR JOISTS

SIZE	DWG. NO.	REV
B	TYP - EZ5R	A

SCALE: 1:64 | WEIGHT: | SHEET 4 OF 4

PROPRIETARY AND CONFIDENTIAL
 THE INFORMATION CONTAINED IN THIS DRAWING IS THE SOLE PROPERTY OF STAYING HOME CORPORATION. ANY REPRODUCTION IN PART OR AS A WHOLE WITHOUT THE WRITTEN PERMISSION OF STAYING HOME CORPORATION IS PROHIBITED.