

- Features:**
- Battery Powered: 24 VDC Control System
  - Rated Load: 500 lbs
  - Speed: 15-18 fpm
  - Max. Travel: 21'
  - Car Size: 41"W x 41"D x 76"H
  - Overhead Clearance: 86" Min.
  - Powder Coated Metal: Gray White
  - Vision Panels: Clear Acrylic
  - Car Light: Recessed LED
  - Telephone: Inside Telephone Cabinet
  - Automatic up/down controls
  - Key Lock on controls
  - Emergency Stop Switch and Alarm
  - Status LED
  - Winding Drum Drive with two 1/4" aircraft cables
  - Slack Cable Safety Device
  - Final Limit Switches
  - Electromechanical Interlocks on Hoistway Doors
  - Door Position switch on Sliding Car Gate

DESIGNED TO COMPLY WITH ASME A17.1 PART 5.3 - 2019 WHEN PROPERLY INSTALLED	NAME	DATE
	DRAWN	7/16/2019
	CHECKED	
	ENG APPR.	
	MFG APPR.	
	Q.A.	
PROPRIETARY AND CONFIDENTIAL THE INFORMATION CONTAINED IN THIS DRAWING IS THE SOLE PROPERTY OF STAYING HOME CORPORATION. ANY REPRODUCTION IN PART OR AS A WHOLE WITHOUT THE WRITTEN PERMISSION OF STAYING HOME CORPORATION IS PROHIBITED.	COMMENTS:	

Staying Home Corporation  
2501 Anaconda Rd  
Harrisonville, MO 64701  
816-380-2427  
www.stayinghome.com

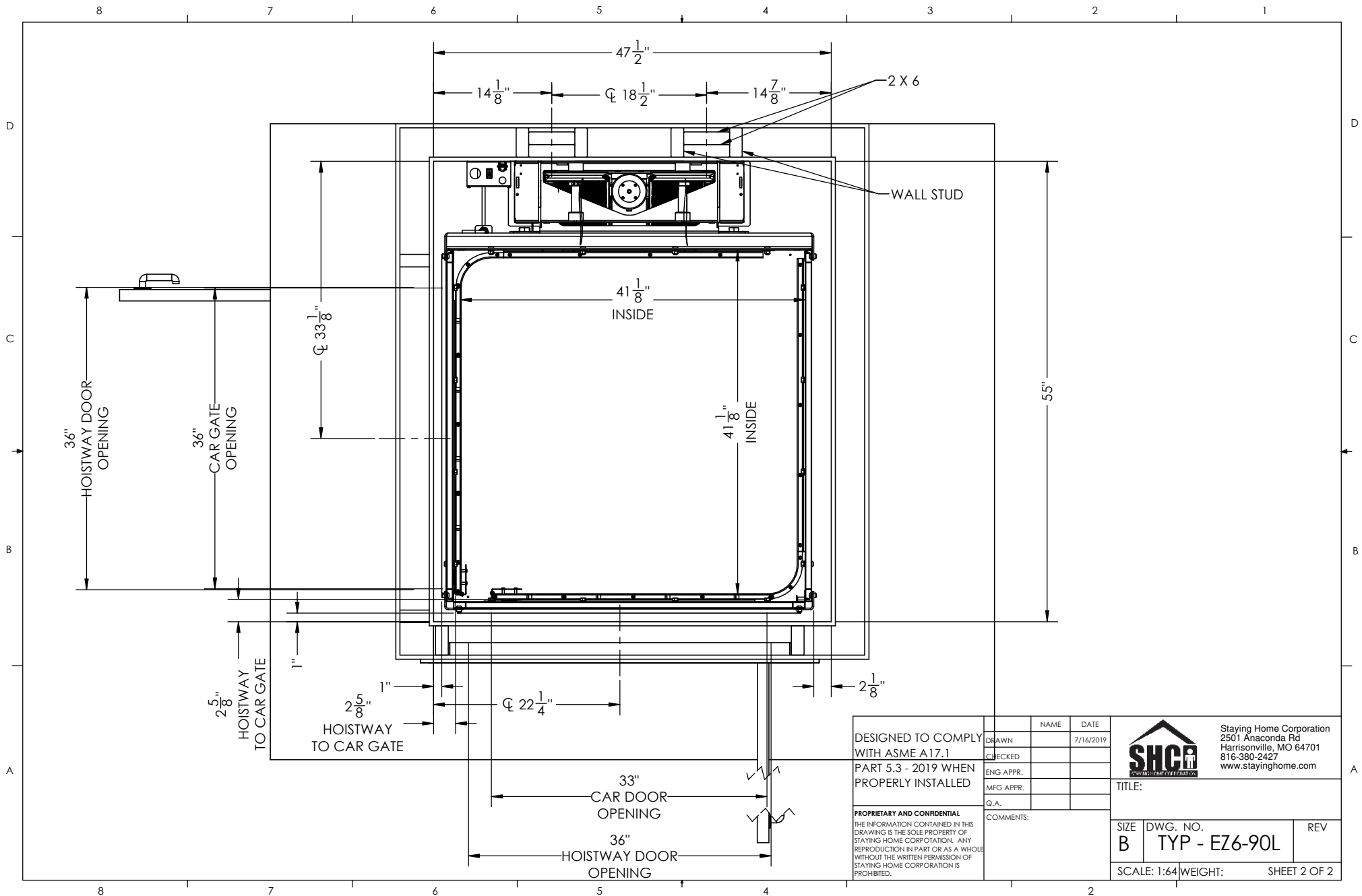
**SHCI**  
CORPORATION

TITLE:  
EZ6 90° FRONT/LEFT ENTRY

SIZE	DWG. NO.	REV
B	TYP - EZ6-90L	

SCALE: 1:96 WEIGHT: SHEET 1 OF 2

SPECIFICATIONS AND DIMENSIONS  
SUBJECT TO CHANGE WITHOUT NOTICE



DESIGNED TO COMPLY WITH ASME A17.1 PART 5.3 - 2019 WHEN PROPERLY INSTALLED  
 PROPRIETARY AND CONFIDENTIAL  
 THE INFORMATION CONTAINED IN THIS DRAWING IS THE SOLE PROPERTY OF STAYING HOME CORPORATION. ANY REPRODUCTION IN PART OR AS A WHOLE WITHOUT THE WRITTEN PERMISSION OF STAYING HOME CORPORATION IS PROHIBITED.

	NAME	DATE
DRAWN		7/16/2019
CHECKED		
ENG APPR.		
MFG APPR.		
Q.A.		
COMMENTS:		

 Staying Home Corporation 2501 Anaconda Rd Harrisonville, MO 64701 816-380-2427 www.stayinghome.com		TITLE:	
		SIZE B	DWG. NO. TYP - EZ6-90L
SCALE: 1:64		WEIGHT:	SHEET 2 OF 2