

**Features:**

- Battery Powered: 24 VDC Control System
- Rated Load: 500 lbs
- Speed: 15-18 fpm
- Max. Travel: 21'
- Car Size: 33"W x 33"D x 76"H
- Overhead Clearance: 86" Min.
- Powder Coated Metal: Gray White
- Vision Panels: Clear Acrylic
- Car Light: Recessed LED
- Telephone: Inside Telephone Cabinet
- Automatic up/down controls
- Key Lock on controls
- Emergency Stop Switch and Alarm
- Status LED
- Winding Drum Drive with two 1/4" aircraft cables
- Slack Cable Safety Device
- Final Limit Switches
- Electromechanical Interlocks on Hoistway Doors
- Door Position switch on Sliding Car Gate

DESIGNED TO COMPLY WITH ASME A17.1 PART 5.3 - 2019 WHEN PROPERLY INSTALLED

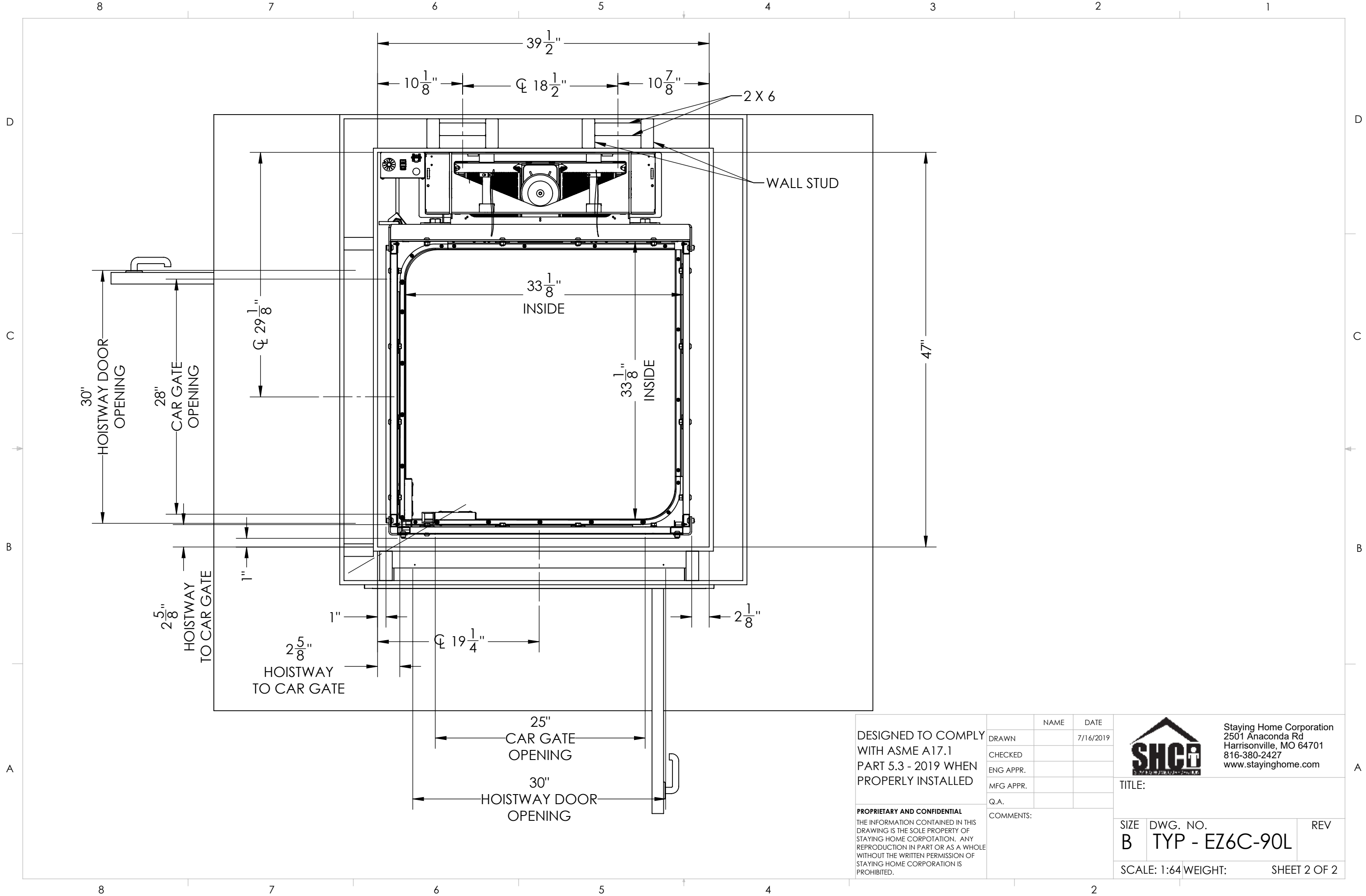
**PROPRIETARY AND CONFIDENTIAL**  
 THE INFORMATION CONTAINED IN THIS DRAWING IS THE SOLE PROPERTY OF STAYING HOME CORPORATION. ANY REPRODUCTION IN PART OR AS A WHOLE WITHOUT THE WRITTEN PERMISSION OF STAYING HOME CORPORATION IS PROHIBITED.

	NAME	DATE
DRAWN		2/15/2024
CHECKED		
ENG APPR.		
MFG APPR.		
Q.A.		
COMMENTS:		


 Staying Home Corporation  
 2501 Anaconda Rd  
 Harrisonville, MO 64701  
 816-380-2427  
 www.stayinghome.com

TITLE: EZ6C 90° FRONT/LEFT ENTRY		
SIZE B	DWG. NO. TYP - EZ6C-90L	REV
SCALE: 1:96	WEIGHT:	SHEET 1 OF 2

SPECIFICATIONS AND DIMENSIONS SUBJECT TO CHANGE WITHOUT NOTICE



DESIGNED TO COMPLY  
 WITH ASME A17.1  
 PART 5.3 - 2019 WHEN  
 PROPERLY INSTALLED

**PROPRIETARY AND CONFIDENTIAL**  
 THE INFORMATION CONTAINED IN THIS  
 DRAWING IS THE SOLE PROPERTY OF  
 STAYING HOME CORPORATION. ANY  
 REPRODUCTION IN PART OR AS A WHOLE  
 WITHOUT THE WRITTEN PERMISSION OF  
 STAYING HOME CORPORATION IS  
 PROHIBITED.

	NAME	DATE
DRAWN		7/16/2019
CHECKED		
ENG APPR.		
MFG APPR.		
Q.A.		
COMMENTS:		



Staying Home Corporation  
 2501 Anaconda Rd  
 Harrisonville, MO 64701  
 816-380-2427  
 www.stayinghome.com

TITLE:		
SIZE <b>B</b>	DWG. NO. <b>TYP - EZ6C-90L</b>	REV
SCALE: 1:64	WEIGHT:	SHEET 2 OF 2