
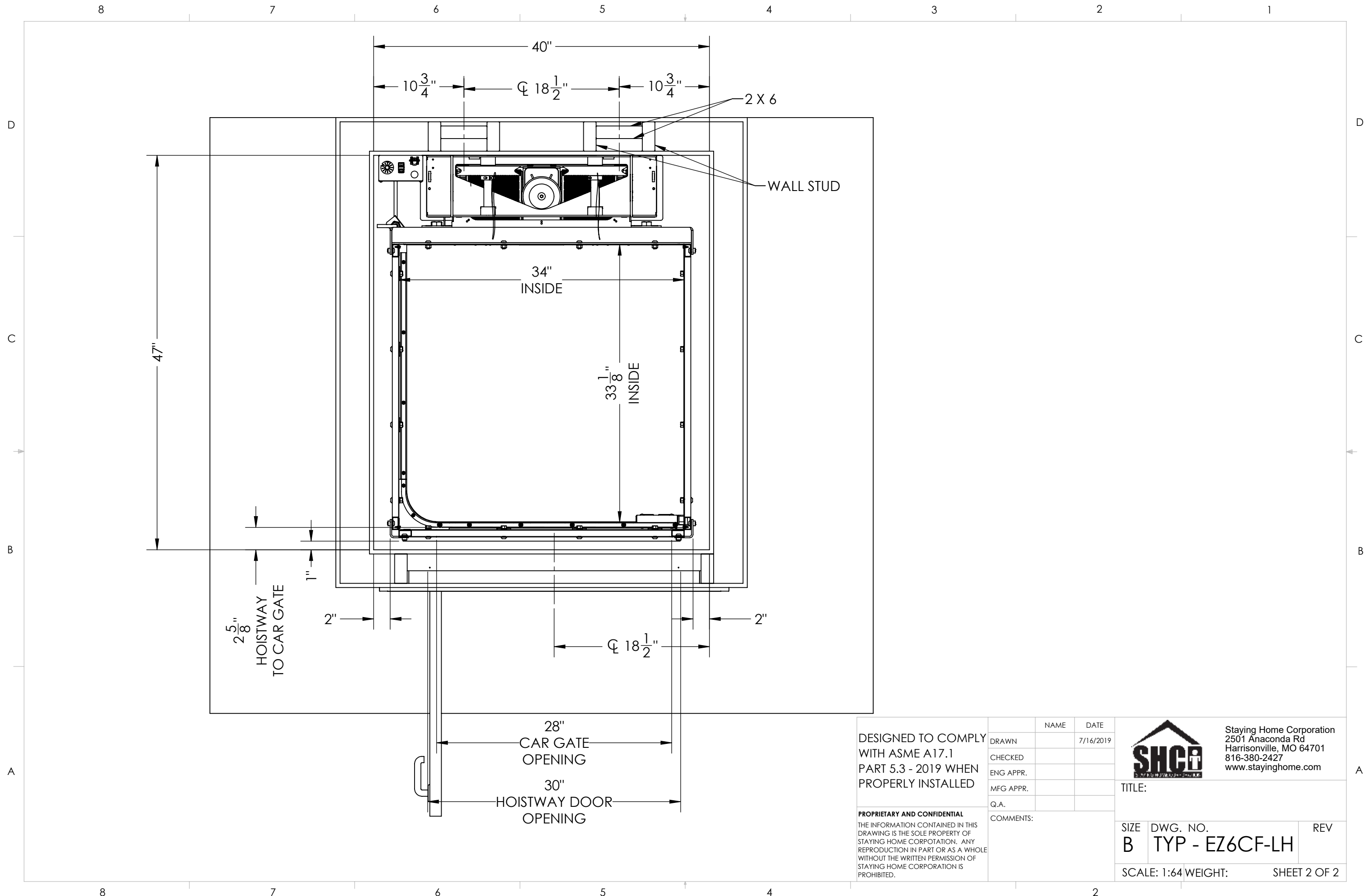


- Features:**
- Battery Powered: 24 VDC Control System
 - Rated Load: 500 lbs
 - Speed: 15-18 fpm
 - Max. Travel: 21'
 - Car Size: 34"W x 33"D x 76"H
 - Overhead Clearance: 86" Min.
 - Powder Coated Metal: Gray White
 - Vision Panels: Clear Acrylic
 - Car Light: Recessed LED
 - Telephone: Inside Telephone Cabinet
 - Automatic up/down controls
 - Key Lock on controls
 - Emergency Stop Switch and Alarm
 - Status LED
 - Winding Drum Drive with two 1/4" aircraft cables
 - Slack Cable Safety Device
 - Final Limit Switches
 - Electromechanical Interlocks on Hoistway Doors
 - Door Position switch on Sliding Car Gate

SPECIFICATIONS AND DIMENSIONS
SUBJECT TO CHANGE WITHOUT NOTICE

DESIGNED TO COMPLY WITH ASME A17.1 PART 5.3 - 2019 WHEN PROPERLY INSTALLED	NAME	DATE	 Staying Home Corporation 2501 Anaconda Rd Harrisonville, MO 64701 816-380-2427 www.stayinghome.com
	DRAWN	2/15/2024	
PROPRIETARY AND CONFIDENTIAL THE INFORMATION CONTAINED IN THIS DRAWING IS THE SOLE PROPERTY OF STAYING HOME CORPORATION. ANY REPRODUCTION IN PART OR AS A WHOLE WITHOUT THE WRITTEN PERMISSION OF STAYING HOME CORPORATION IS PROHIBITED.	CHECKED		TITLE: EZ6C FRONT ENTRY LH CAR DOOR
	ENG APPR.		
	MFG APPR.		SIZE DWG. NO. REV
	Q.A.		B TYP - EZ6CF-LH
	COMMENTS:		SCALE: 1:96 WEIGHT: SHEET 1 OF 2



DESIGNED TO COMPLY WITH ASME A17.1 PART 5.3 - 2019 WHEN PROPERLY INSTALLED

PROPRIETARY AND CONFIDENTIAL
 THE INFORMATION CONTAINED IN THIS DRAWING IS THE SOLE PROPERTY OF STAYING HOME CORPORATION. ANY REPRODUCTION IN PART OR AS A WHOLE WITHOUT THE WRITTEN PERMISSION OF STAYING HOME CORPORATION IS PROHIBITED.

	NAME	DATE
DRAWN		7/16/2019
CHECKED		
ENG APPR.		
MFG APPR.		
Q.A.		
COMMENTS:		



Staying Home Corporation
 2501 Anaconda Rd
 Harrisonville, MO 64701
 816-380-2427
 www.stayinghome.com

TITLE:		
SIZE B	DWG. NO. TYP - EZ6CF-LH	REV
SCALE: 1:64	WEIGHT:	SHEET 2 OF 2