
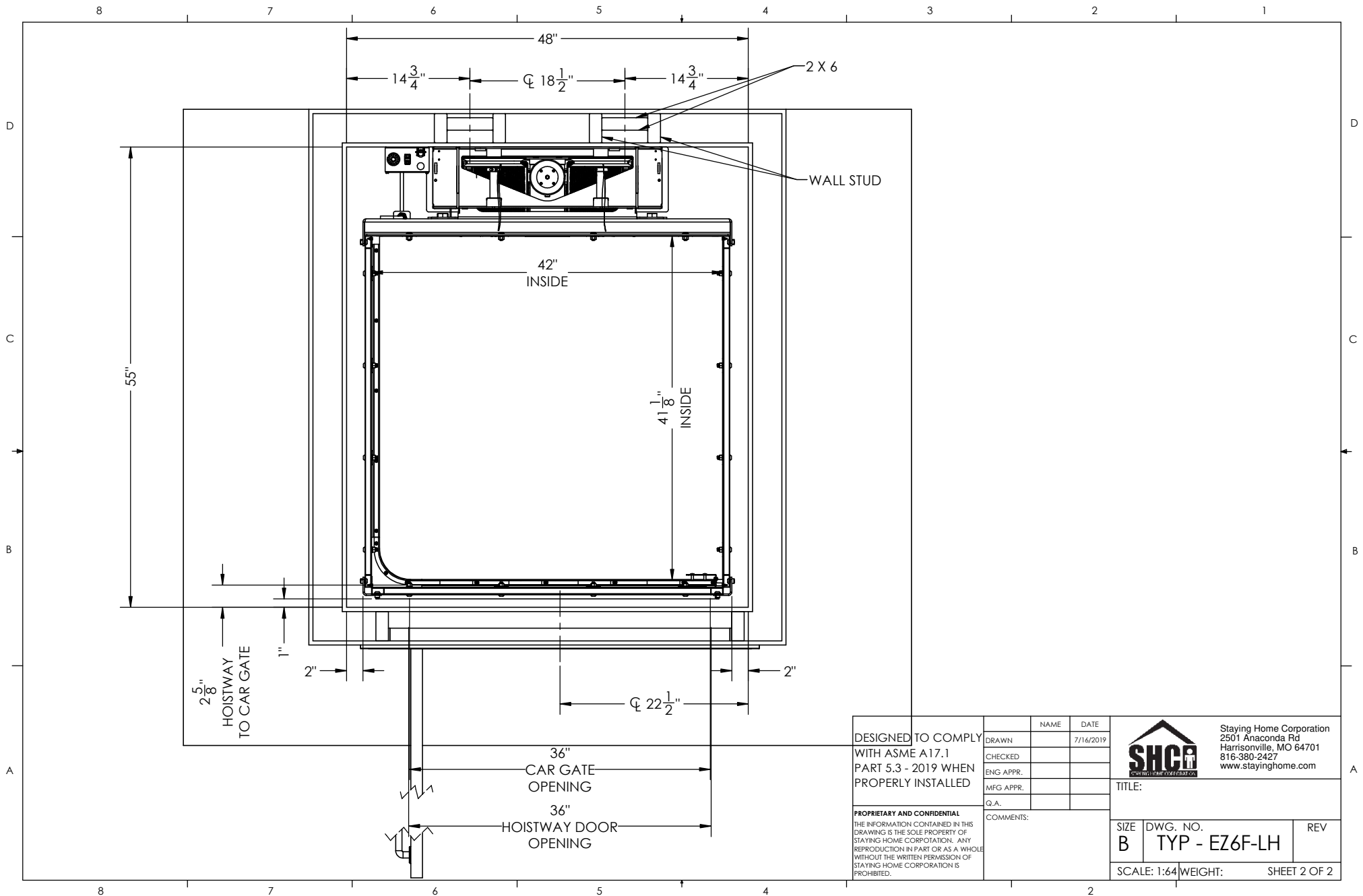



- Features:**
- Battery Powered: 24 VDC Control System
 - Rated Load: 500 lbs
 - Speed: 15-18 fpm
 - Max. Travel: 21'
 - Car Size: 42"W x 41"D x 76"H
 - Overhead Clearance: 86" Min.
 - Powder Coated Metal: Gray White
 - Vision Panels: Clear Acrylic
 - Car Light: Recessed LED
 - Telephone: Inside Telephone Cabinet
 - Automatic up/down controls
 - Key Lock on controls
 - Emergency Stop Switch and Alarm
 - Status LED
 - Winding Drum Drive with two 1/4" aircraft cables
 - Slack Cable Safety Device
 - Final Limit Switches
 - Electromechanical Interlocks on Hoistway Doors
 - Door Position switch on Sliding Car Gate

DESIGNED TO COMPLY WITH ASME A17.1 PART 5.3 - 2019 WHEN PROPERLY INSTALLED	DRAWN	NAME	DATE	 Staying Home Corporation 2501 Anaconda Rd Harrisonville, MO 64701 816-380-2427 www.stayinghome.com
	CHECKED		7/16/2019	
	ENG APPR.			
	MFG APPR.			
	Q.A.			
PROPRIETARY AND CONFIDENTIAL THE INFORMATION CONTAINED IN THIS DRAWING IS THE SOLE PROPERTY OF STAYING HOME CORPORATION. ANY REPRODUCTION IN PART OR AS A WHOLE WITHOUT THE WRITTEN PERMISSION OF STAYING HOME CORPORATION IS PROHIBITED.	COMMENTS:			TITLE: EZ6 FRONT ENTRY LH CAR DOOR
SIZE B		DWG. NO. TYP - EZ6F-LH	REV	
SCALE: 1:96		WEIGHT:	SHEET 1 OF 2	

SPECIFICATIONS AND DIMENSIONS
SUBJECT TO CHANGE WITHOUT NOTICE



DESIGNED TO COMPLY WITH ASME A17.1 PART 5.3 - 2019 WHEN PROPERLY INSTALLED PROPRIETARY AND CONFIDENTIAL THE INFORMATION CONTAINED IN THIS DRAWING IS THE SOLE PROPERTY OF STAYING HOME CORPORATION. ANY REPRODUCTION IN PART OR AS A WHOLE WITHOUT THE WRITTEN PERMISSION OF STAYING HOME CORPORATION IS PROHIBITED.	DRAWN	NAME	DATE	 Staying Home Corporation 2501 Anaconda Rd Harrisonville, MO 64701 816-380-2427 www.stayinghome.com
	CHECKED		7/16/2019	
	ENG APPR.			
	MFG APPR.			
	Q.A.			
COMMENTS:	TITLE:			SIZE DWG. NO. REV B TYP - EZ6F-LH
SCALE: 1:64 WEIGHT:				SHEET 2 OF 2