

120VAC AND PHONE JUNCTION BOX EITHER SIDE

HOISTWAY BY OTHERS FRAMING AS REQUIRED

36" DOOR OPENING

SLIDING CAR GATE WITH POSITION SENSOR

EMI INTERLOCK FOR HOISTWAY DOORS INCLUDED

36X80 HOISTWAY DOORS BY OTHERS SWING TBD

EXTRUDED ALUMINUM GUIDE RAILS

Features:

- Battery Powered: 24 VDC Control System
- Rated Load: 500 lbs
- Speed: 15-18 fpm
- Max. Travel: 21'
- Car Size: 42"W x 41"D x 76"H
- Overhead Clearance: 86" Min.
- Powder Coated Metal: Gray White
- Vision Panels: Clear Acrylic
- Car Light: Recessed LED
- Telephone: Inside Telephone Cabinet
- Automatic up/down controls
- Key Lock on controls
- Emergency Stop Switch and Alarm
- Status LED
- Winding Drum Drive with two 1/4" aircraft cables
- Slack Cable Safety Device
- Final Limit Switches
- Electromechanical Interlocks on Hoistway Doors
- Door Position switch on Sliding Car Gate

DESIGNED TO COMPLY WITH ASME A17.1 PART 5.3 - 2019 WHEN PROPERLY INSTALLED

NAME	DATE
DRAWN	7/16/2019
CHECKED	
ENG APPR.	
MFG APPR.	
Q.A.	



Staying Home Corporation
2501 Anaconda Rd
Harrisonville, MO 64701
816-380-2427
www.stayinghome.com

PROPRIETARY AND CONFIDENTIAL
THE INFORMATION CONTAINED IN THIS DRAWING IS THE SOLE PROPERTY OF STAYING HOME CORPORATION. ANY REPRODUCTION IN PART OR AS A WHOLE WITHOUT THE WRITTEN PERMISSION OF STAYING HOME CORPORATION IS PROHIBITED.

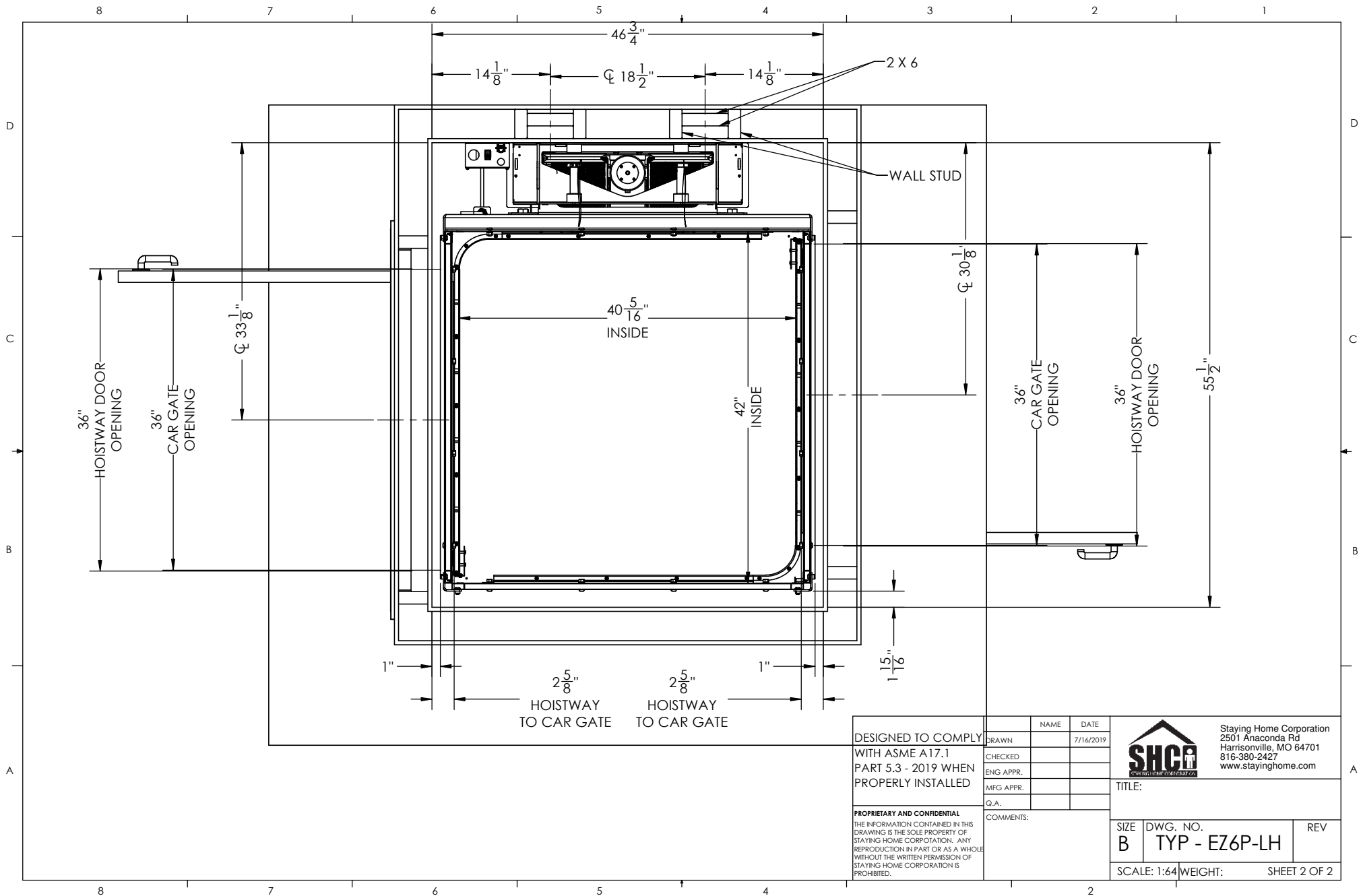
COMMENTS:

TITLE:
EZ6 STRAIGHT THRU LH CAR DOOR

SIZE	DWG. NO.	REV
B	TYP - EZ6P-LH	

SCALE: 1:96 WEIGHT: SHEET 1 OF 2

SPECIFICATIONS AND DIMENSIONS SUBJECT TO CHANGE WITHOUT NOTICE



DESIGNED TO COMPLY
WITH ASME A17.1
PART 5.3 - 2019 WHEN
PROPERLY INSTALLED

	NAME	DATE
DRAWN		7/16/2019
CHECKED		
ENG APPR.		
MFG APPR.		
Q.A.		


 Staying Home Corporation
 2501 Anaconda Rd
 Harrisonville, MO 64701
 816-380-2427
 www.stayinghome.com

PROPRIETARY AND CONFIDENTIAL
THE INFORMATION CONTAINED IN THIS
DRAWING IS THE SOLE PROPERTY OF
STAYING HOME CORPORATION. ANY
REPRODUCTION IN PART OR AS A WHOLE
WITHOUT THE WRITTEN PERMISSION OF
STAYING HOME CORPORATION IS
PROHIBITED.

COMMENTS:

TITLE:		
SIZE B	DWG. NO. TYP - EZ6P-LH	REV
SCALE: 1:64	WEIGHT:	SHEET 2 OF 2