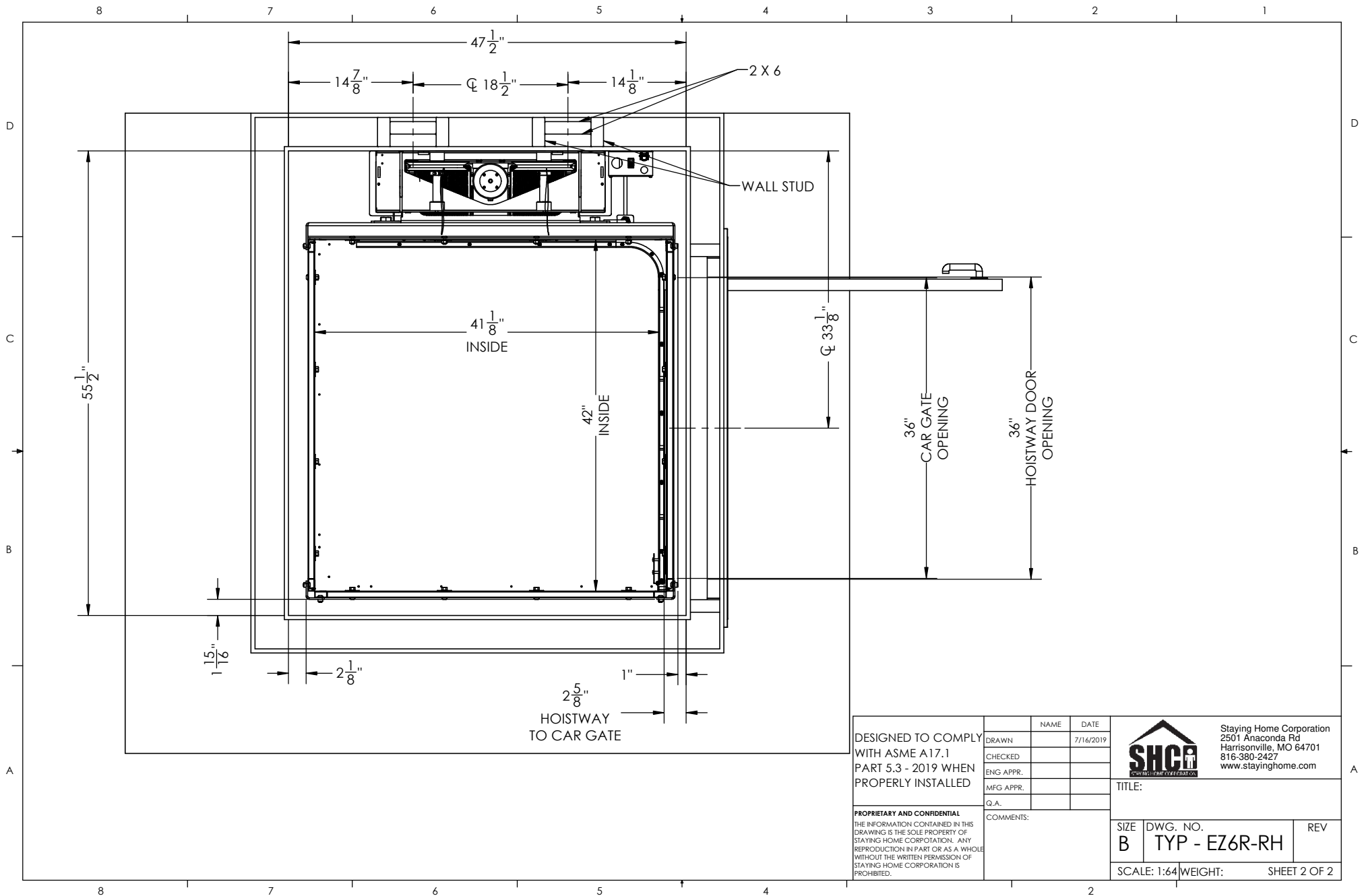



Features:

- Battery Powered: 24 VDC Control System
- Rated Load: 500 lbs
- Speed: 15-18 fpm
- Max. Travel: 21'
- Car Size: 42"W x 41"D x 76"H
- Overhead Clearance: 86" Min.
- Powder Coated Metal: Gray White
- Vision Panels: Clear Acrylic
- Car Light: Recessed LED
- Telephone: Inside Telephone Cabinet
- Automatic up/down controls
- Key Lock on controls
- Emergency Stop Switch and Alarm
- Status LED
- Winding Drum Drive with two 1/4" aircraft cables
- Slack Cable Safety Device
- Final Limit Switches
- Electromechanical Interlocks on Hoistway Doors
- Door Position switch on Sliding Car Gate

DESIGNED TO COMPLY WITH ASME A17.1 PART 5.3 - 2019 WHEN PROPERLY INSTALLED	DRAWN	NAME	DATE	 Staying Home Corporation 2501 Anaconda Rd Harrisonville, MO 64701 816-380-2427 www.stayinghome.com
	CHECKED		7/16/2019	
	ENG APPR.			
	MFG APPR.			
PROPRIETARY AND CONFIDENTIAL THE INFORMATION CONTAINED IN THIS DRAWING IS THE SOLE PROPERTY OF STAYING HOME CORPORATION. ANY REPRODUCTION IN PART OR AS A WHOLE WITHOUT THE WRITTEN PERMISSION OF STAYING HOME CORPORATION IS PROHIBITED.				TITLE: EZ6 RIGHT SIDE ENTRY-RH CAR DOOR
COMMENTS:				SIZE DWG. NO. REV B TYP - EZ6R-RH
SCALE: 1:96 WEIGHT:				SHEET 1 OF 2

SPECIFICATIONS AND DIMENSIONS
SUBJECT TO CHANGE WITHOUT NOTICE



DESIGNED TO COMPLY WITH ASME A17.1 PART 5.3 - 2019 WHEN PROPERLY INSTALLED	DRAWN	NAME	DATE	 Staying Home Corporation 2501 Anaconda Rd Harrisonville, MO 64701 816-380-2427 www.stayinghome.com
	CHECKED		7/16/2019	
	ENG APPR.			
	MFG APPR.			
	Q.A.			
PROPRIETARY AND CONFIDENTIAL THE INFORMATION CONTAINED IN THIS DRAWING IS THE SOLE PROPERTY OF STAYING HOME CORPORATION. ANY REPRODUCTION IN PART OR AS A WHOLE WITHOUT THE WRITTEN PERMISSION OF STAYING HOME CORPORATION IS PROHIBITED.	COMMENTS:		TITLE:	
	SIZE	DWG. NO.	REV	
	B	TYP - EZ6R-RH		
SCALE: 1:64		WEIGHT:	SHEET 2 OF 2	