



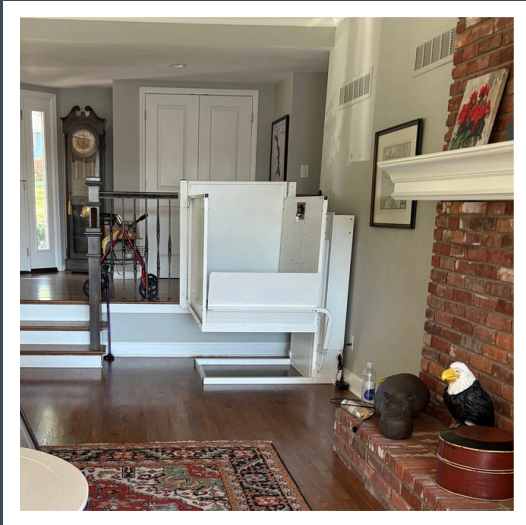
RESIDENTIAL VERTICAL PLATFORM LIFT



WWW.STAYINGHOME.COM



FEATURES



- TRAVEL UP TO 30" OR 60"
- 600 LB. LOAD CAPACITY
- 34" X 54" PLATFORM SIZE (32" INSIDE WIDTH)
- 36" HIGH GUARD RAILS
- DUAL RACK & PINION DRIVE SYSTEM WITH SINGLE SHAFT
- STEEL CONSTRUCTION WITH POWDER COATING
- TOP LANDING GATE (OPTIONAL) OR DOOR INTERLOCK
- FOLDING RAMP
- RESIDENTIAL USE ONLY
 - SUITABLE FOR HOMES WITH 2 FLOORS
- INDOOR OR OUTDOOR USE
- BATTERY POWERED WITH 24 VDC SYSTEM
- BATTERY CHARGES DURING FULL TRAVEL OF UNIT
- 500-WATT MOTOR
- DESIGNED TO MEET A18.1 CODES FOR RES. APPLICATIONS
- MEETS NEC STANDARDS FOR WIRING
- UL-LISTED DOOR INTERLOCK

SAFETY

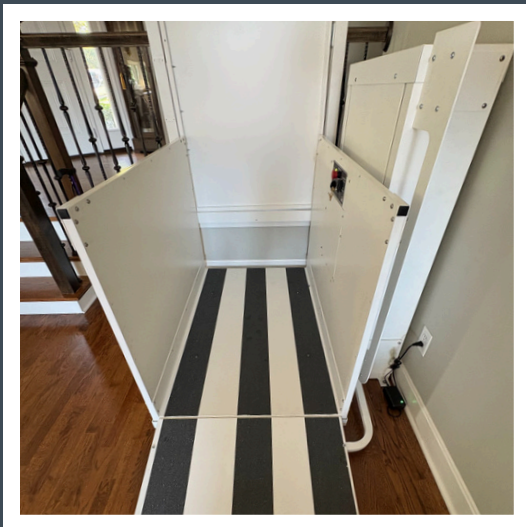
- SAFETY PANS UNDER PLATFORM
 - STOPS TRAVEL IF 4 LBS. OR MORE OF FORCE IS EXERTED UNDERNEATH CAR
- EMERGENCY UNLOCKING DEVICE FOR DOOR LOCK/GATE
- EMERGENCY STOP SWITCH
- TYPE A OVERSPEED SAFETY
- REGULAR AND FINAL LIMIT SWITCHES
- OPEN DOOR SENSOR
- CONSTANT PRESSURE CONTROLS
- MANUAL LOWERING DEVICE

WARRANTY

- 1 YEAR ON BATTERIES
- 2 YEARS ON PARTS
- 3 YEARS ON DRIVE TRAIN/CIRCUIT BOARD

OPTIONS

- TOP DOOR INTERLOCK
- WIRELESS CALL SENDS
- KEYLOCKED CALL SENDS



STAYING HOME CORPORATION

2501 ANACONDA ROAD
HARRISONVILLE, MO 64701

(816) 380-2427
WWW.STAYINGHOME.COM

